



High-Resolution Sequence Stratigraphy – an Outcrop Case Study : Panther Tongue Sandstone, Utah



Based on : Hwang I.G. & Heller, P.L. 2002, Anatomy of a transgressive lag: Panther Tongue Sandstone, Star Point Formation, central Utah. *Sedimentology*, V.49, p.977-999

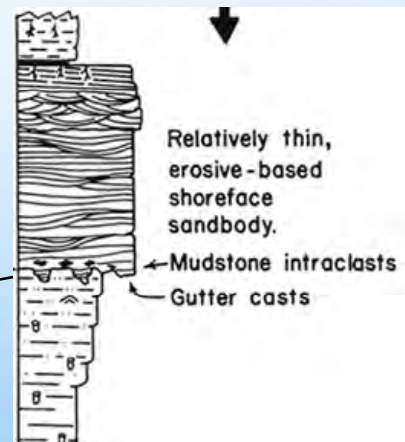
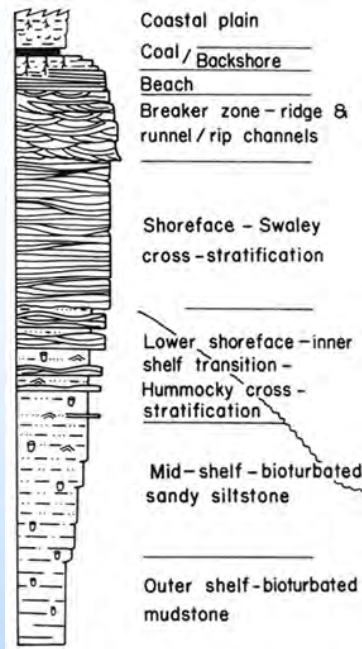
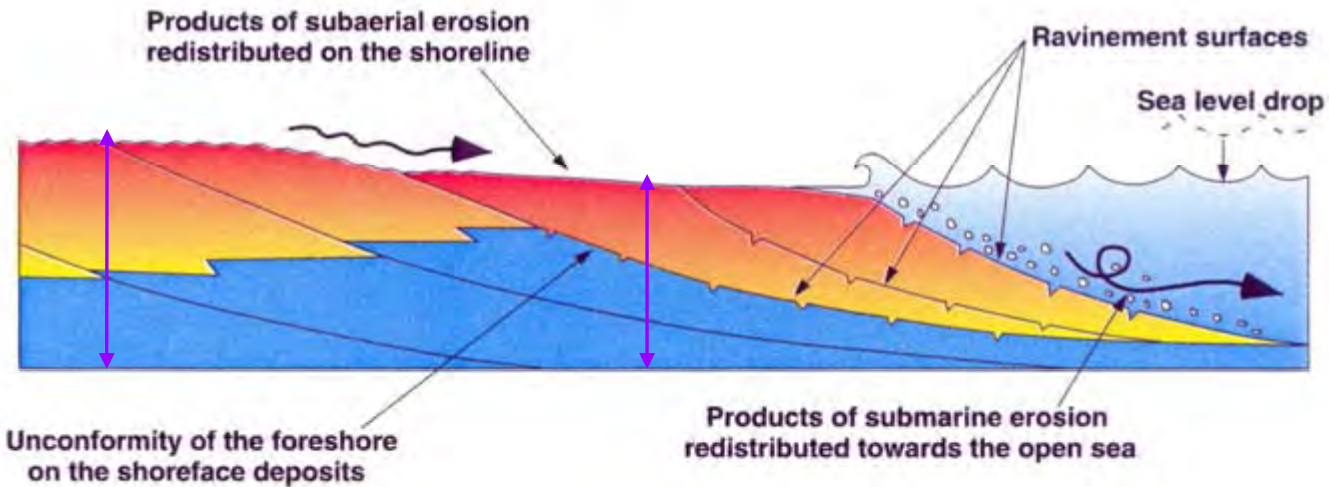
In Gul Hwang



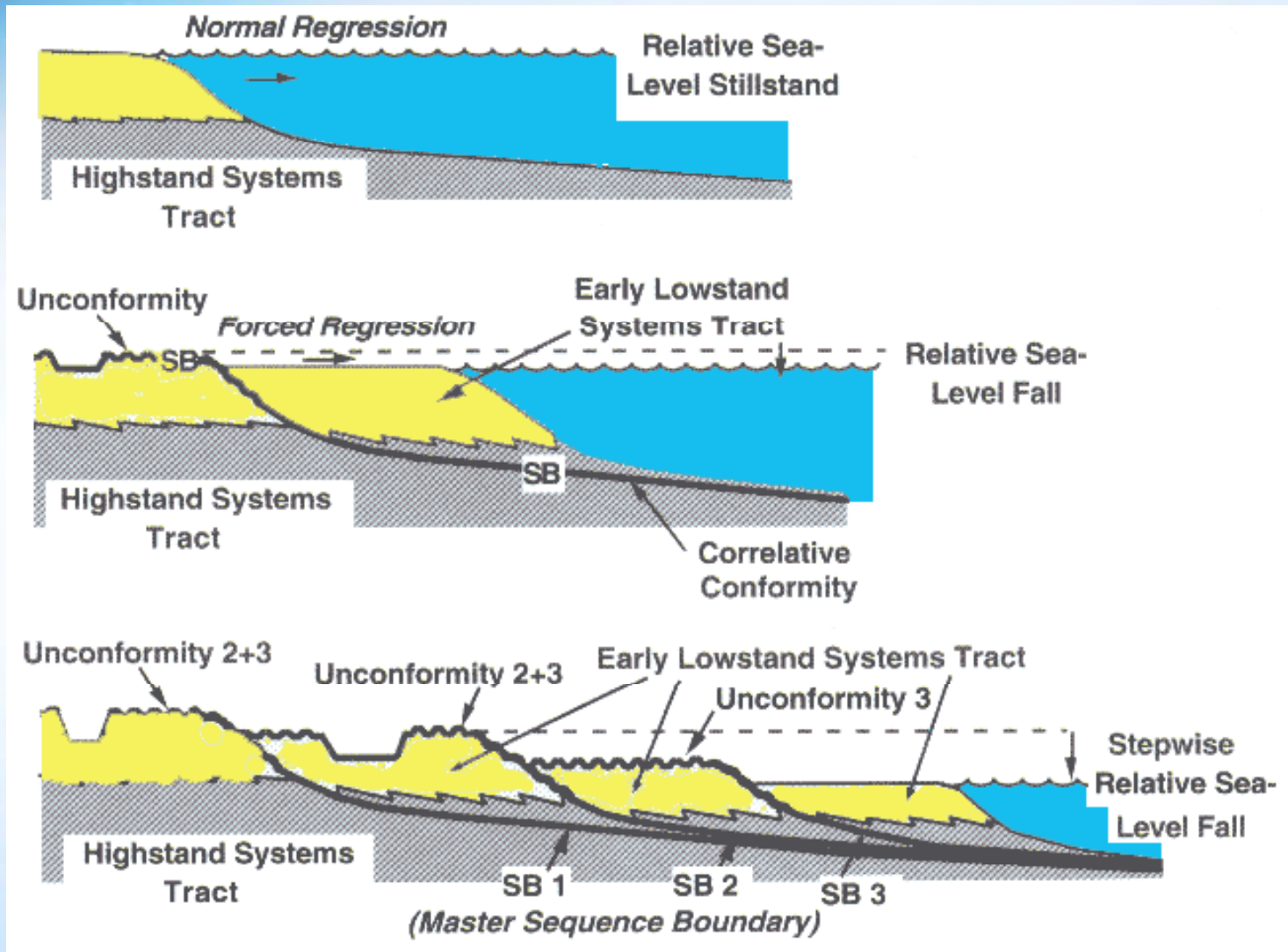
CONTENTS

1. Back-ground of Falling Stage Systems Tract
2. The Panther Tongue Sandstone
3. High Resolution Sequence Stratigraphy
4. Transgressive Lag Deposits

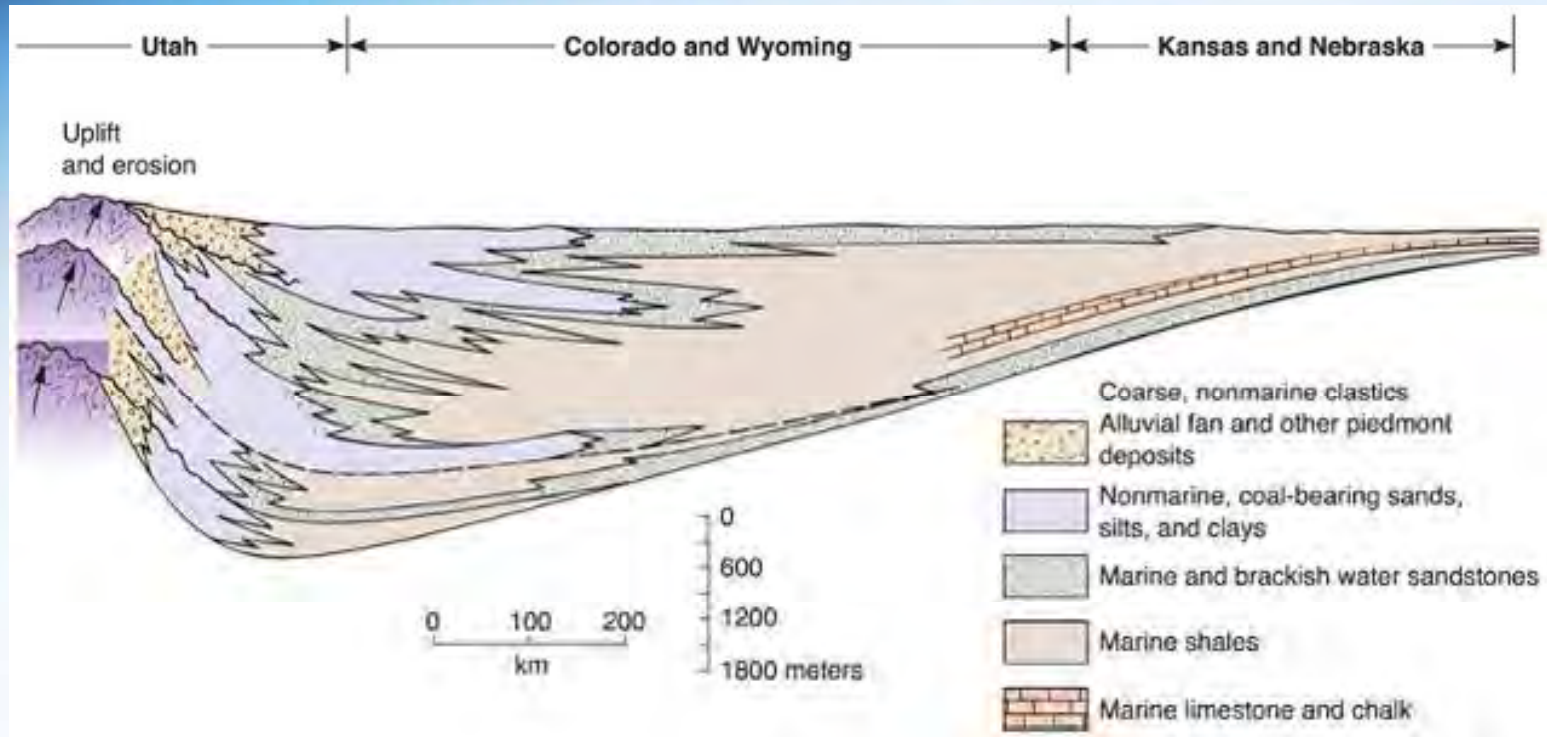
Forced Regression in Shoreface



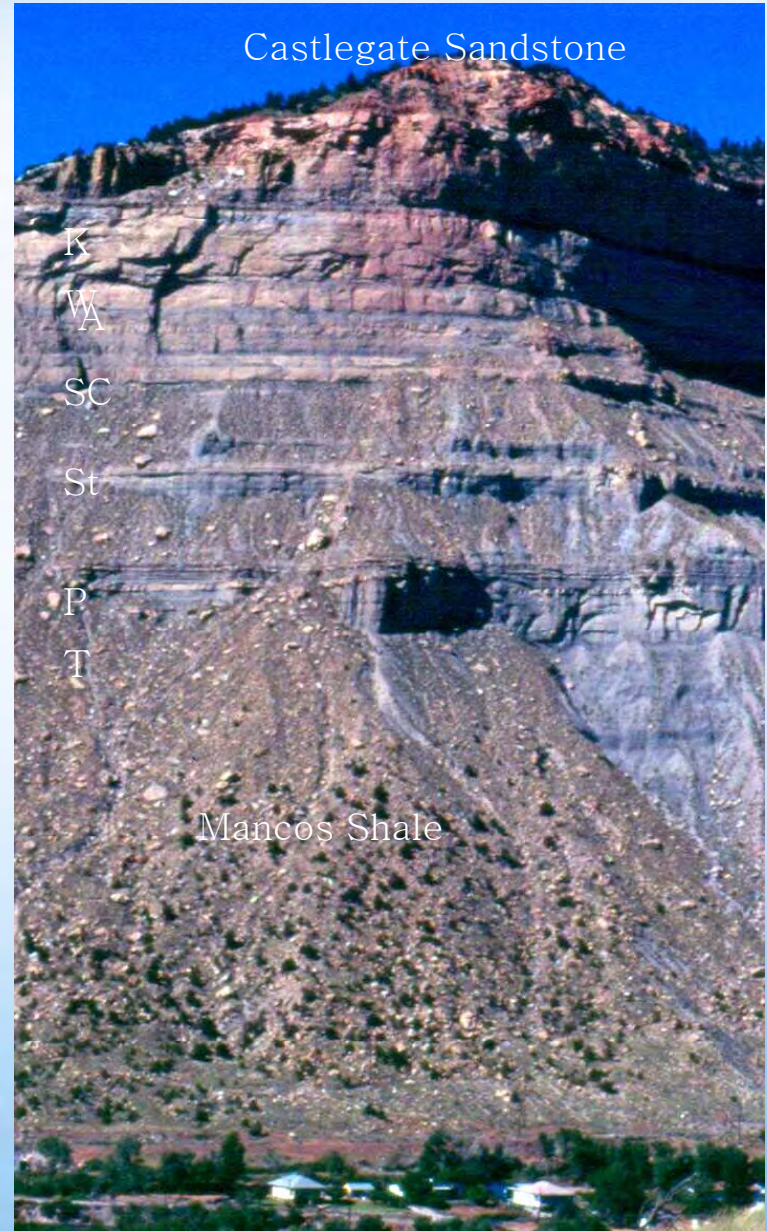
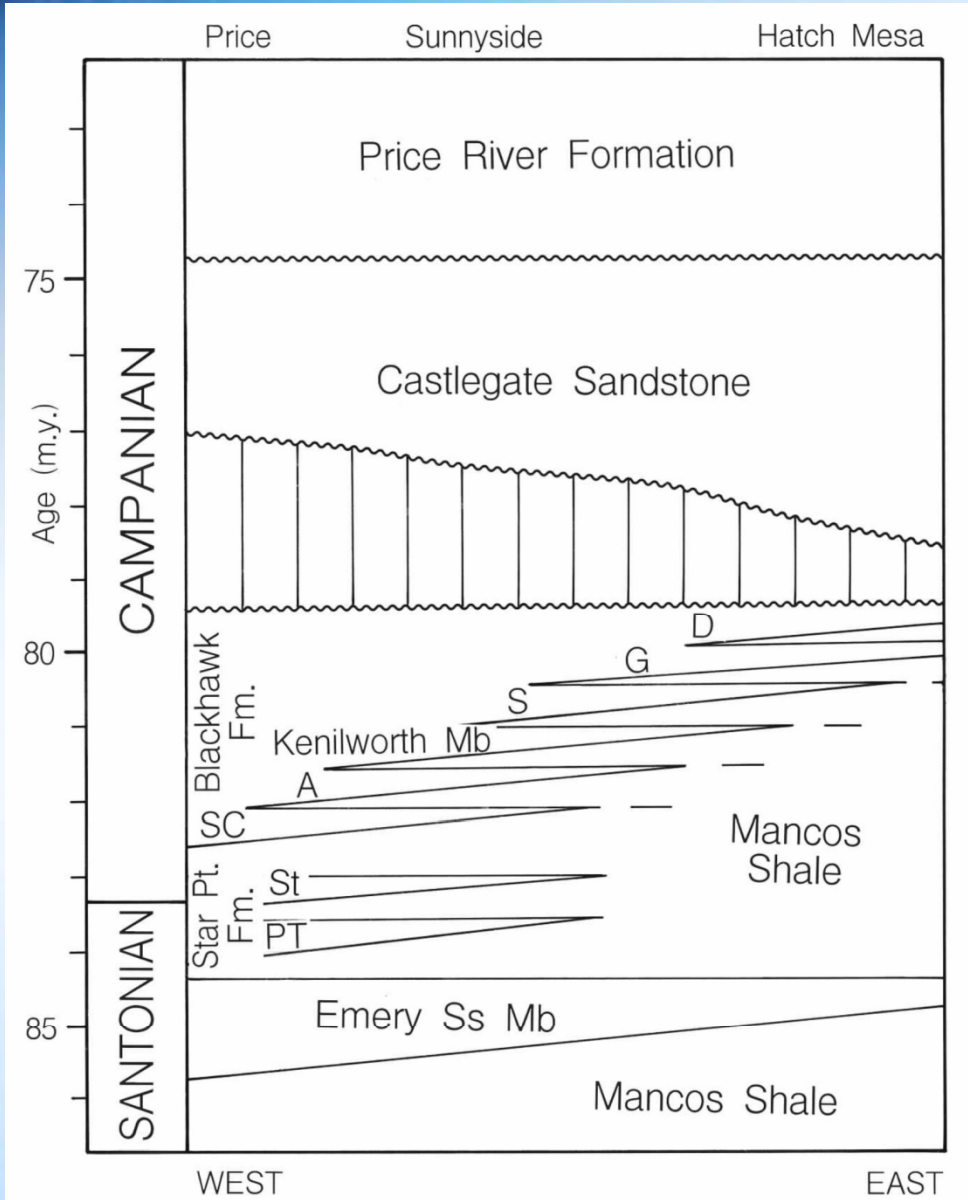
Where is the Sequence Boundary?



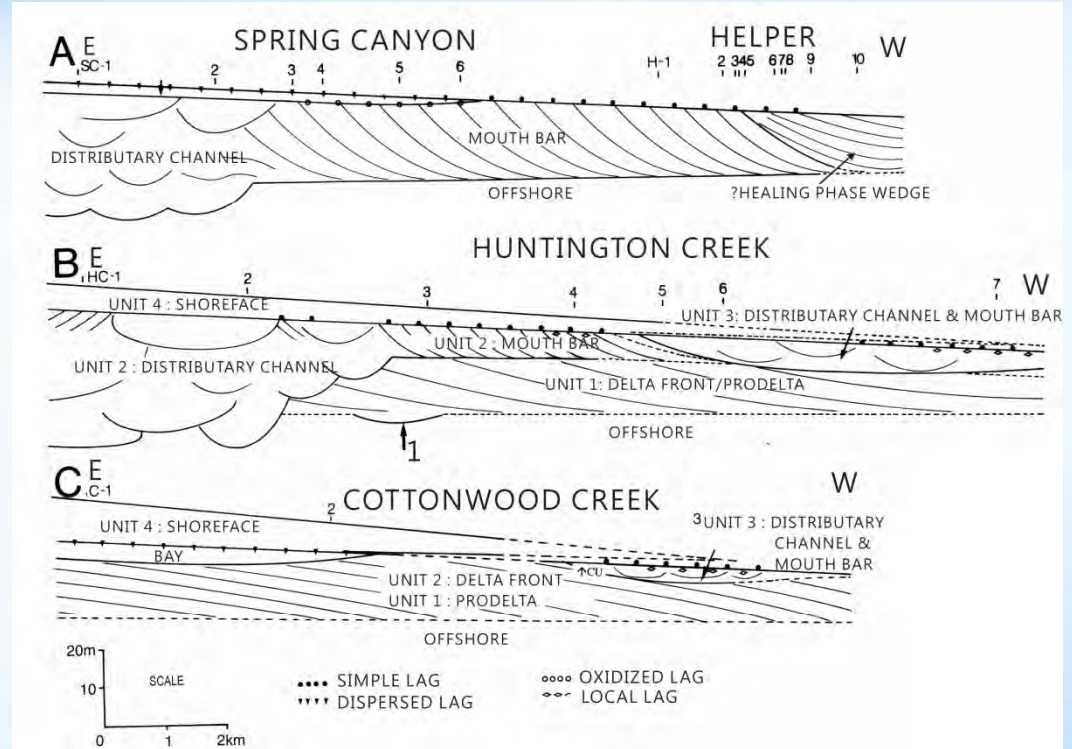
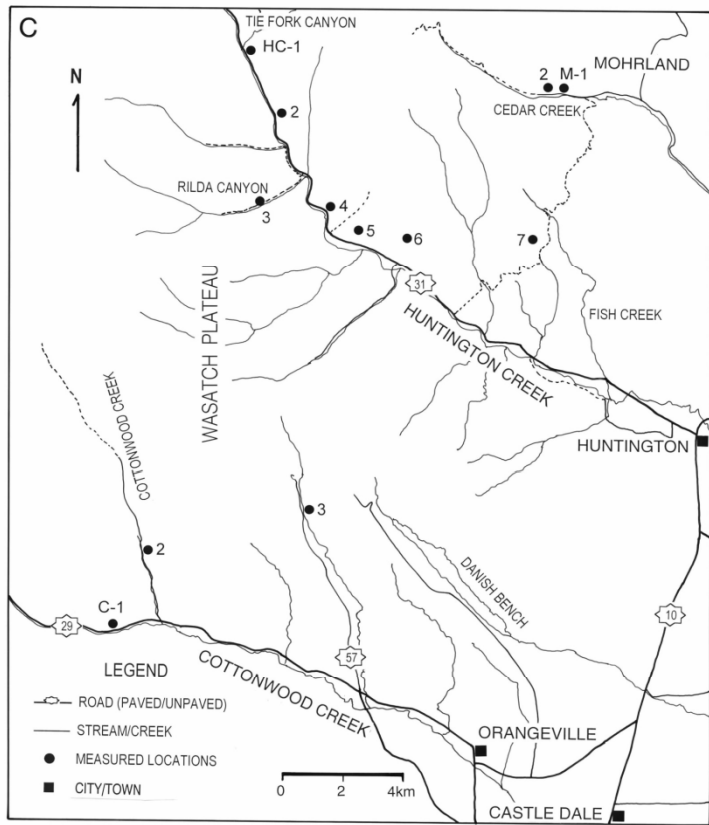
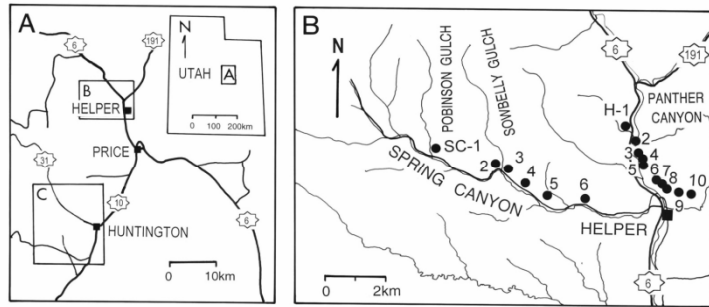
Cretaceous Western Interior Seaway

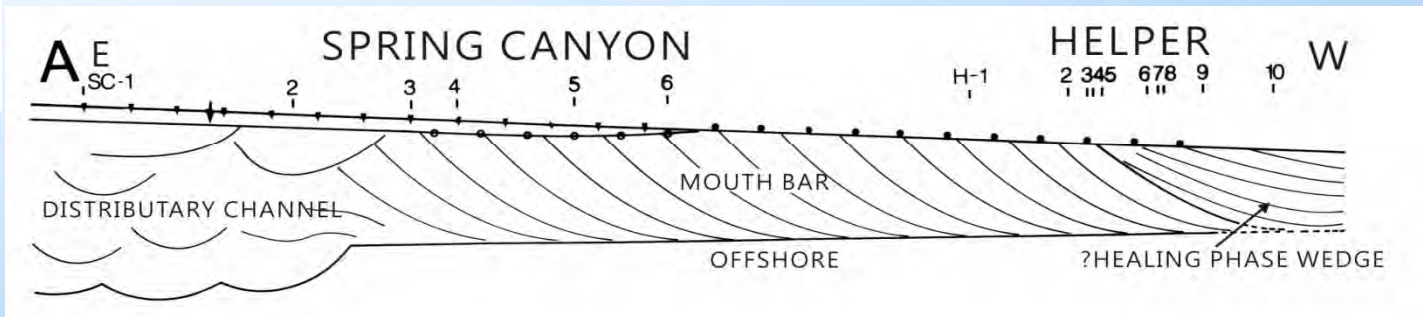
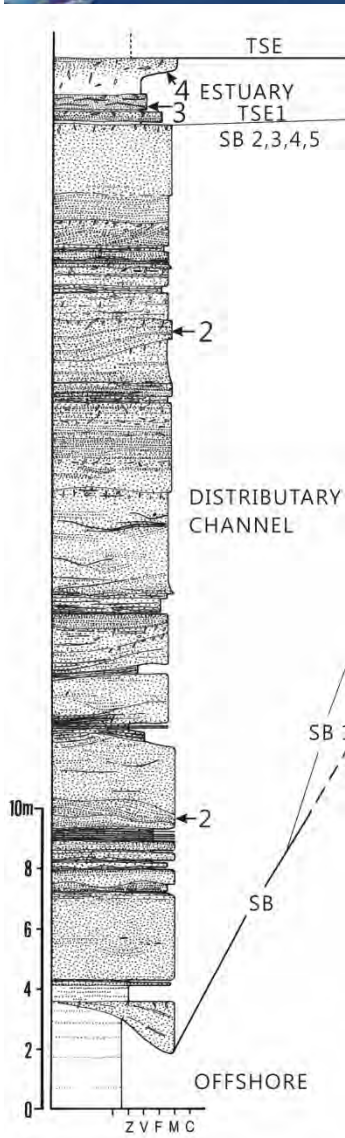


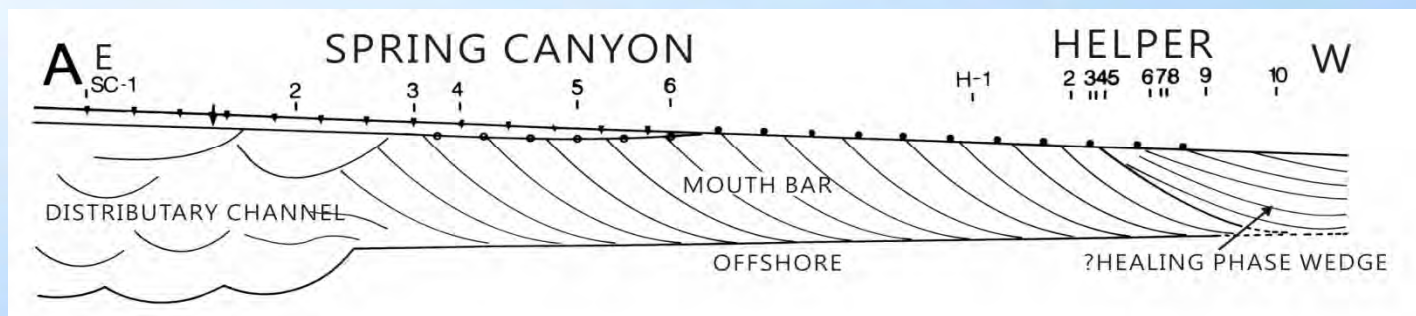
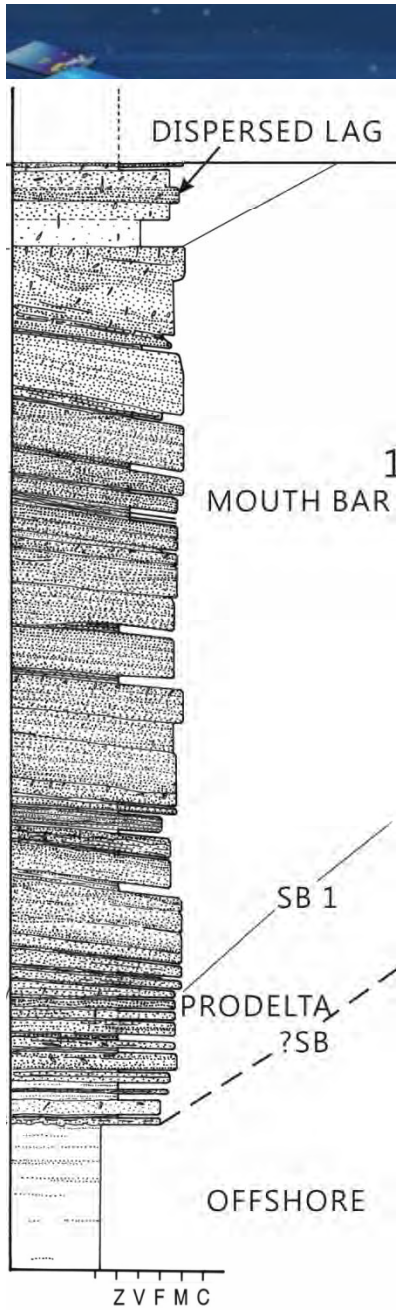
Stratigraphy

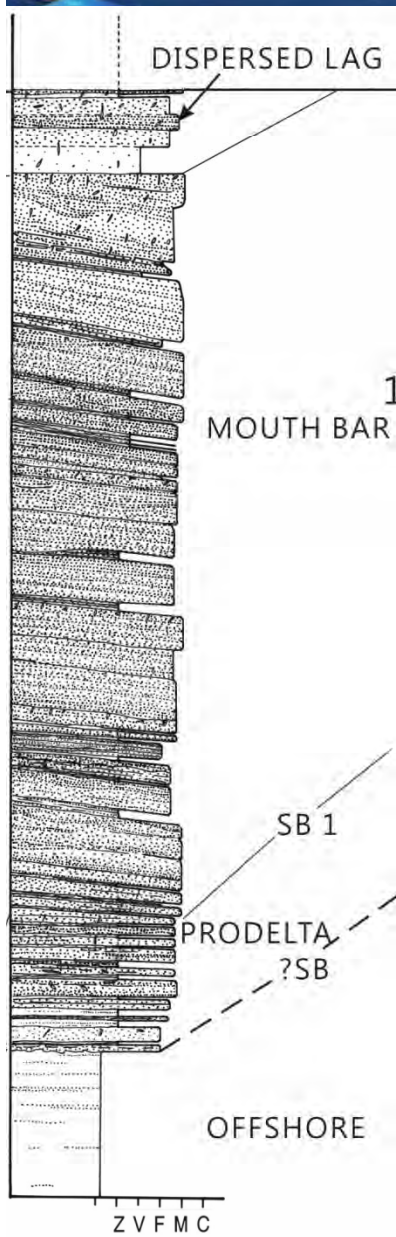


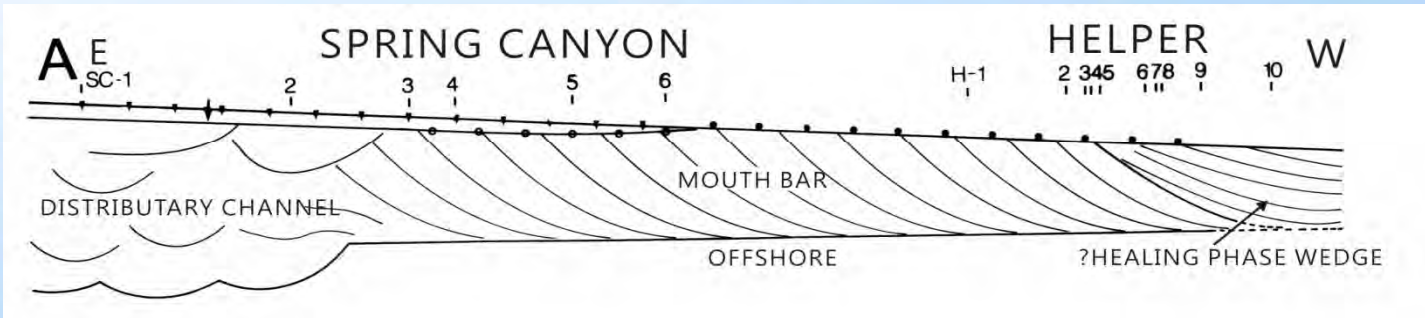
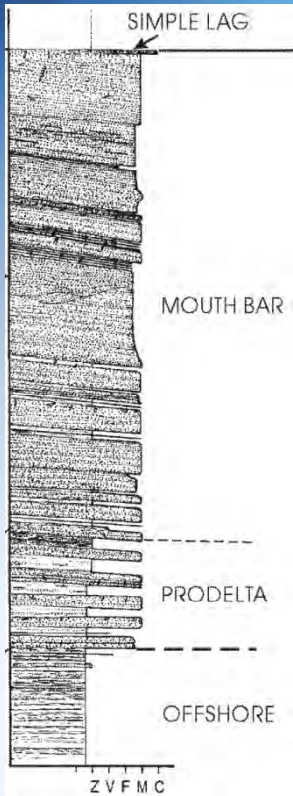
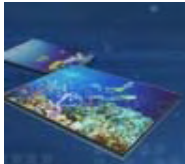
Location Map & Cross Section

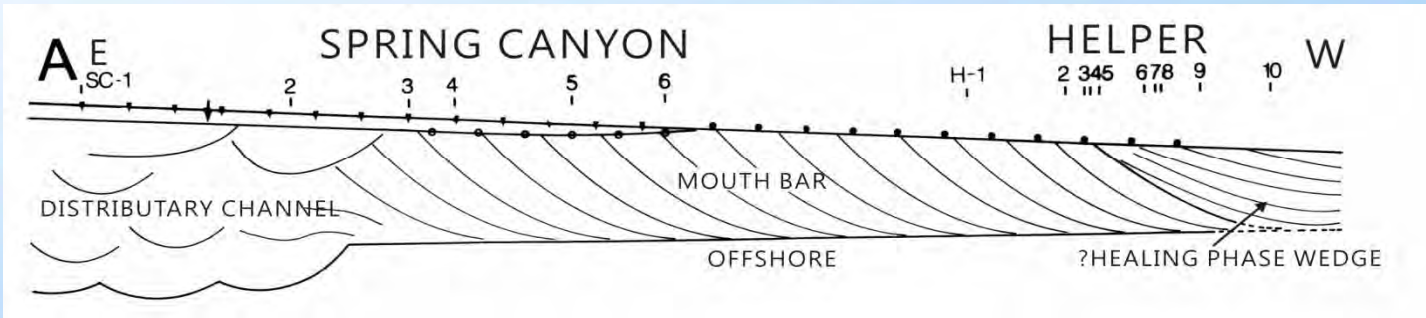
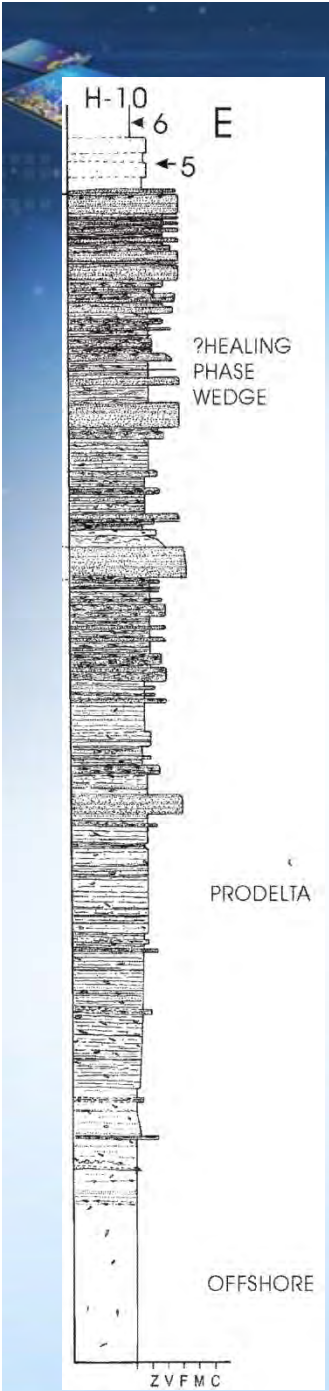


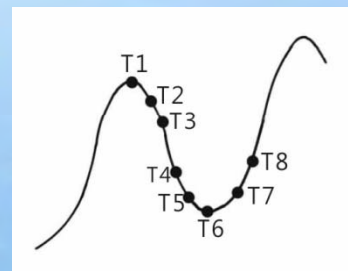
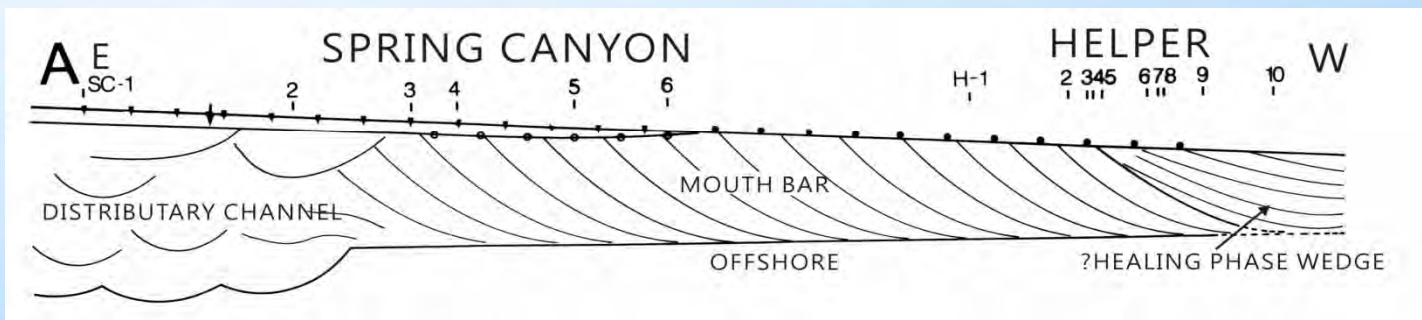
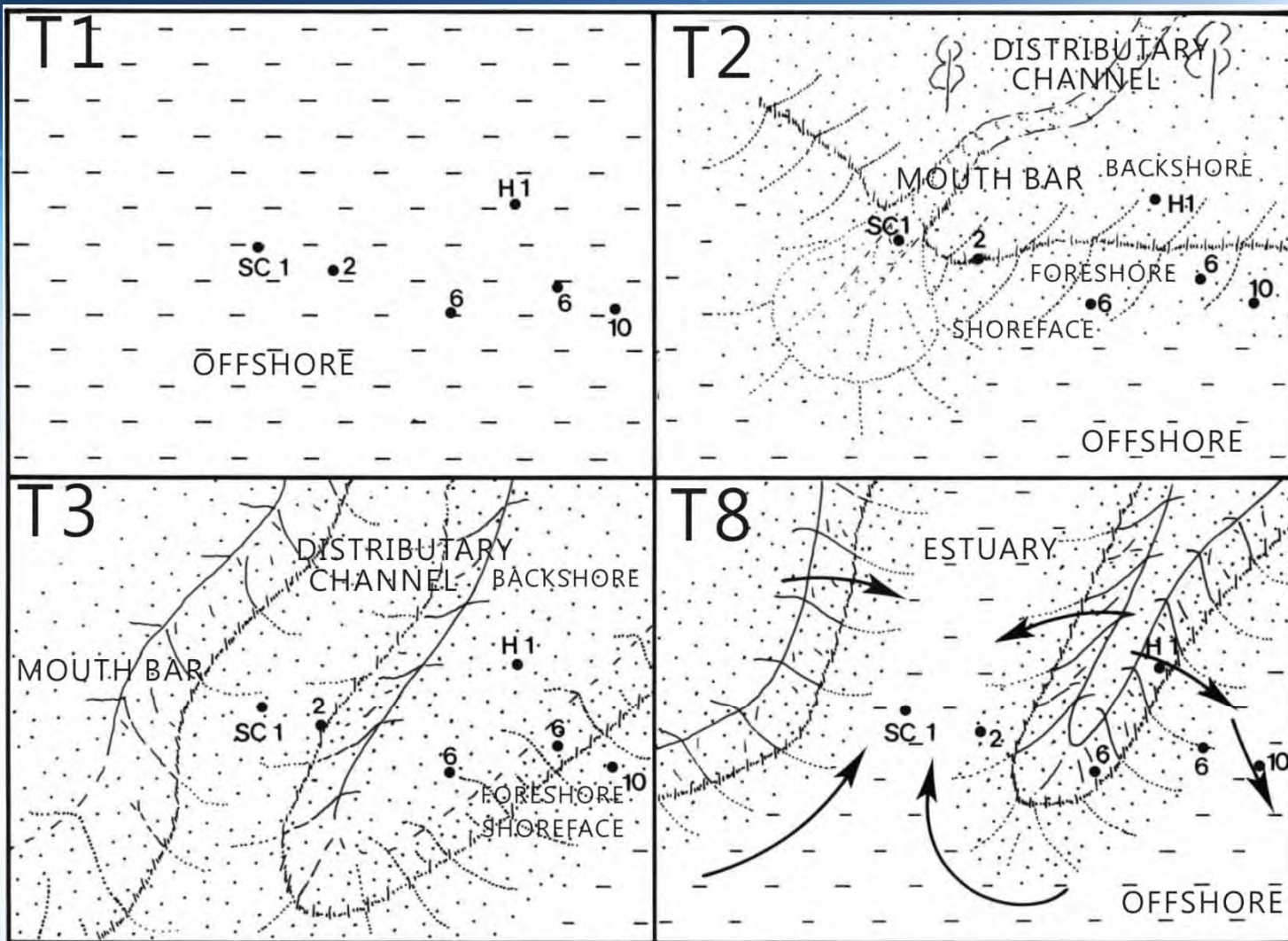
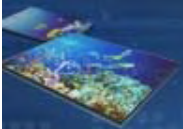


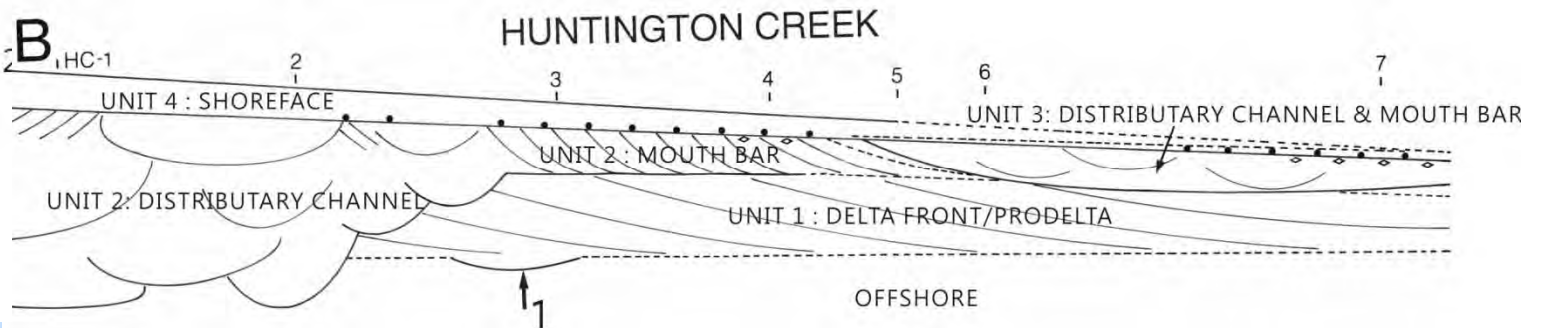
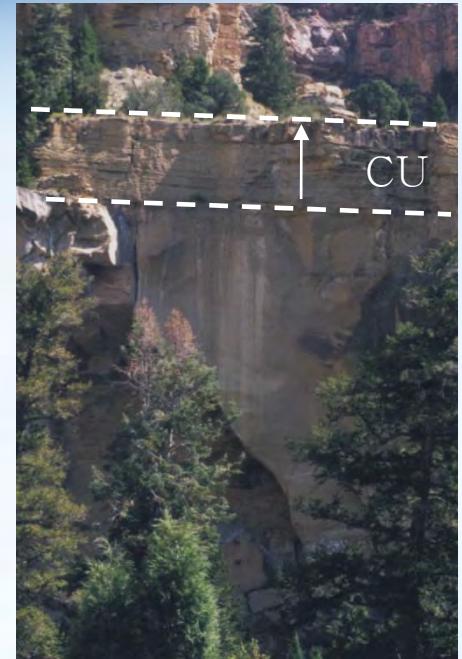
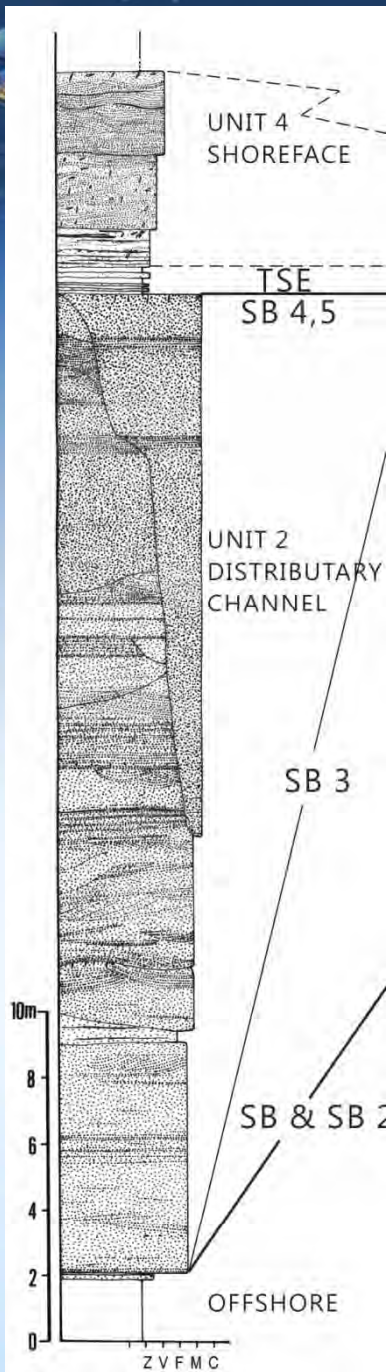


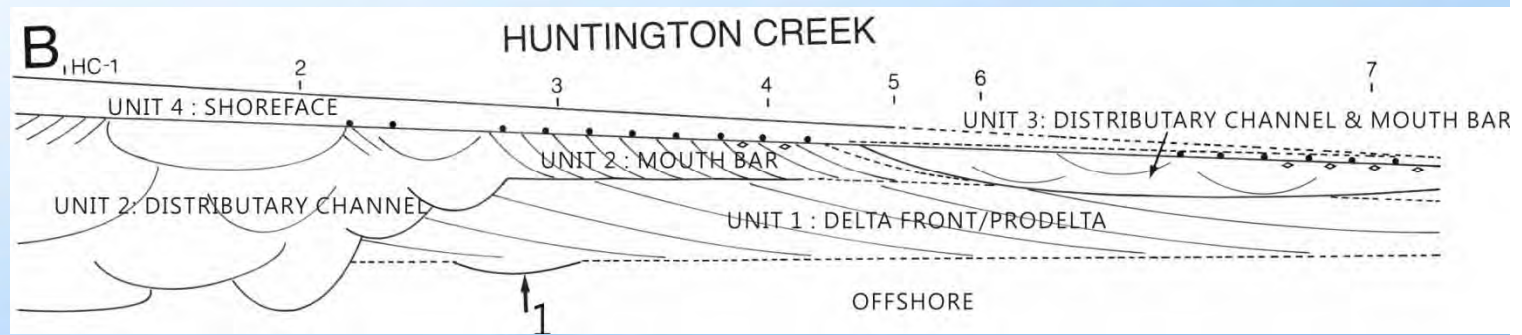
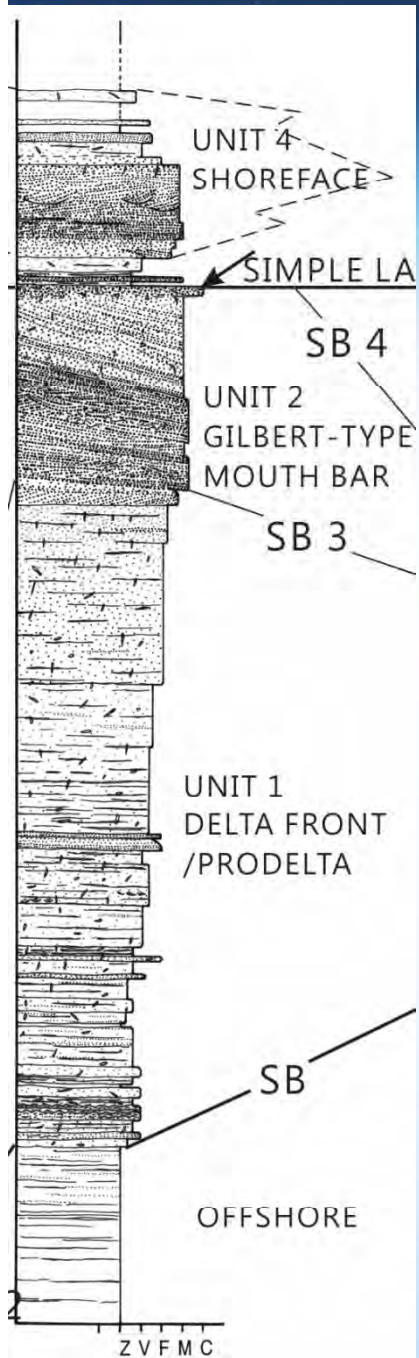




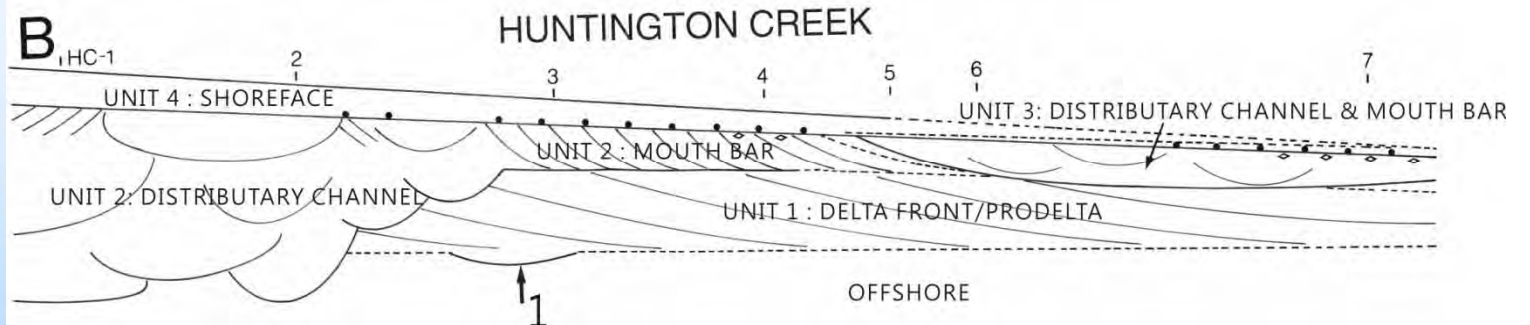
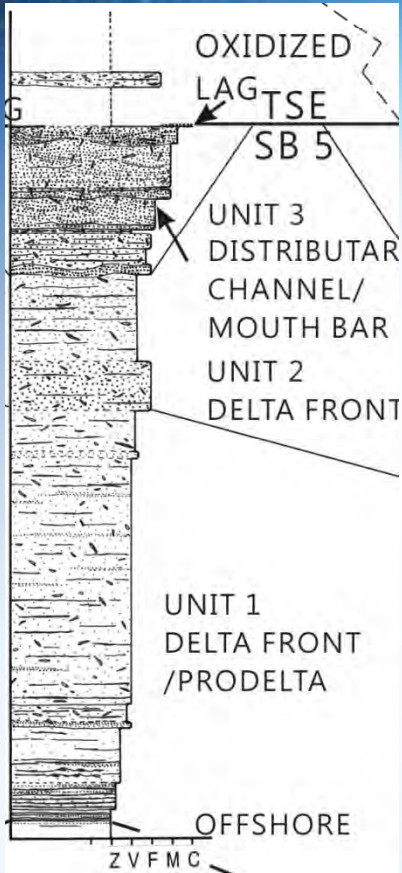
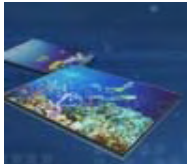




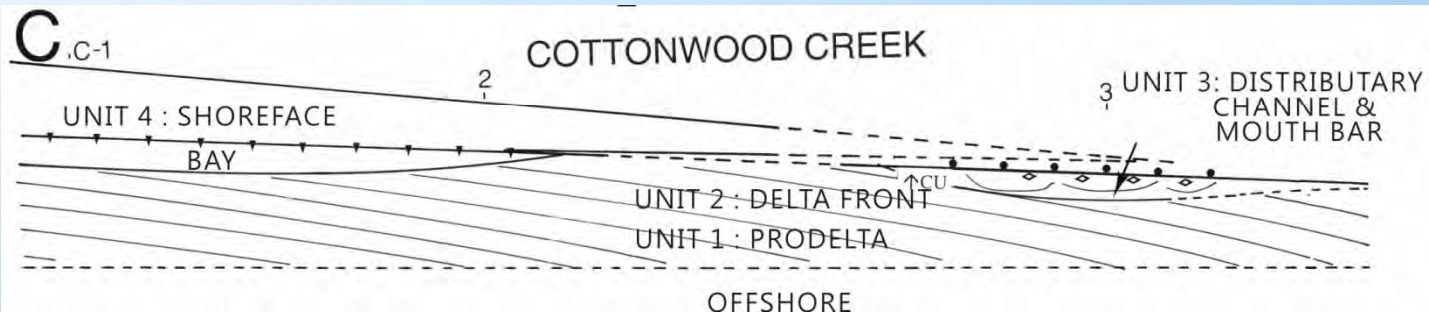
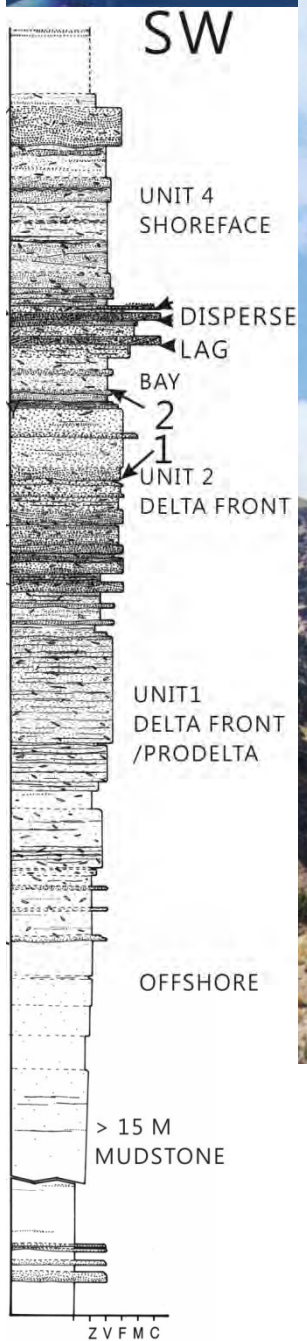


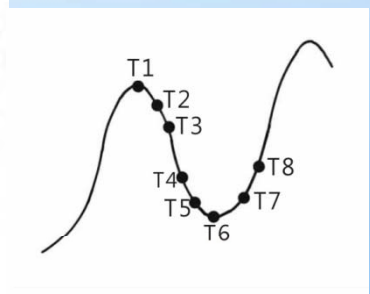
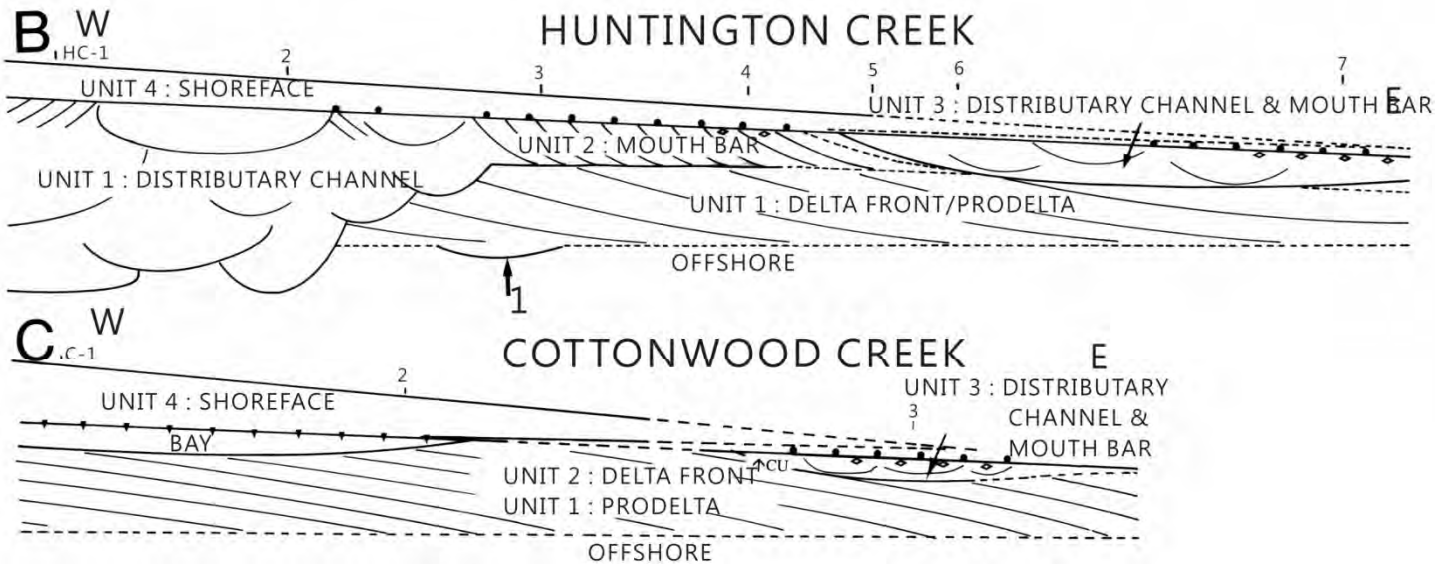
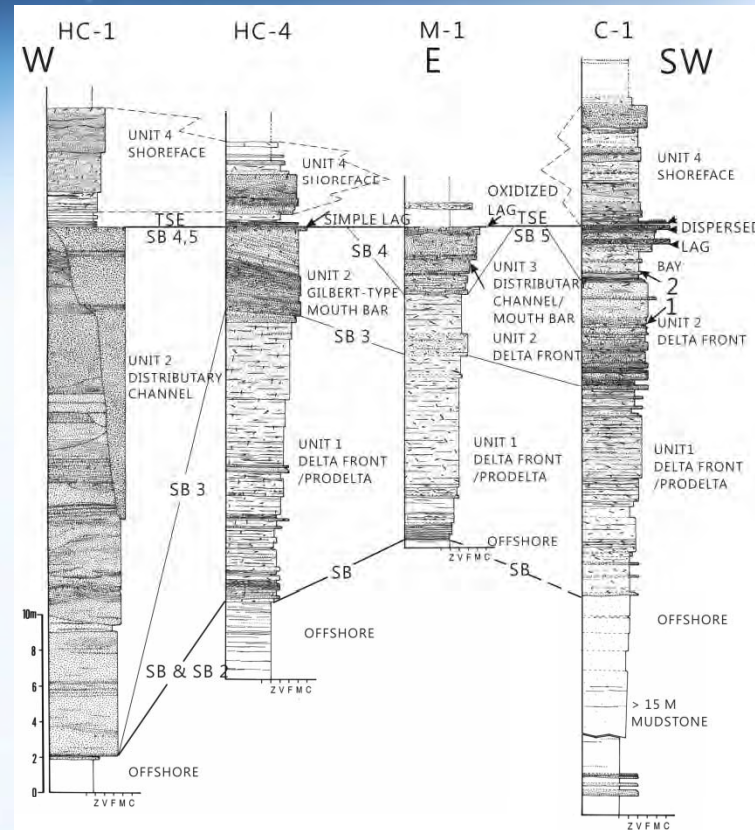
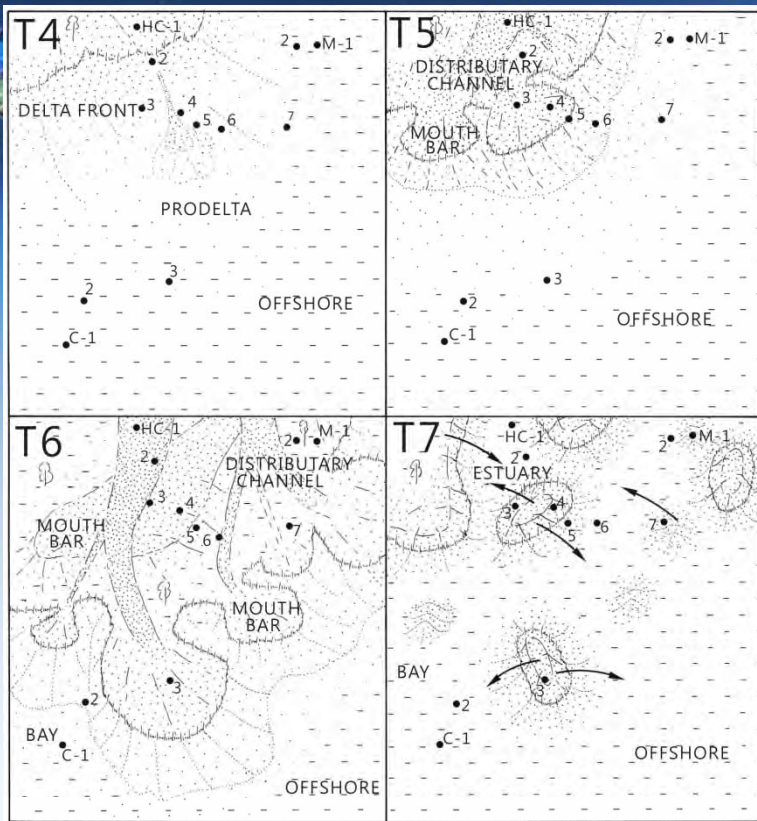








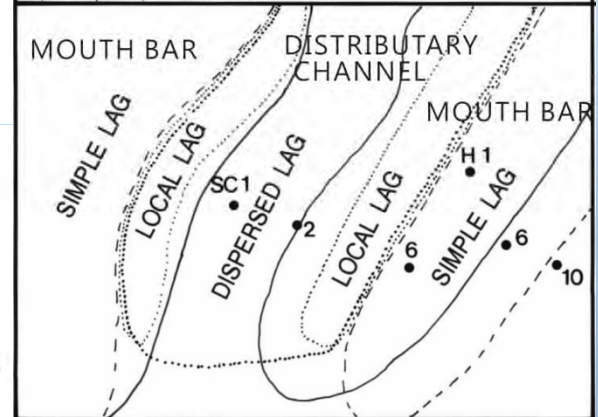
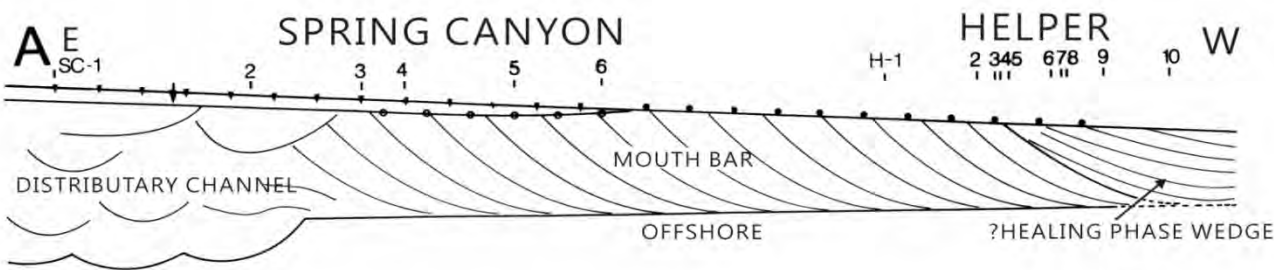
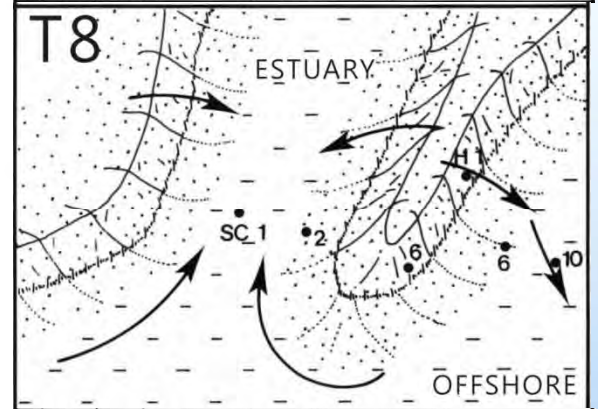
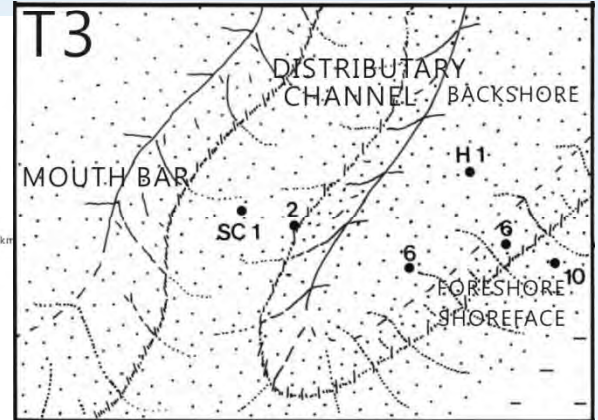
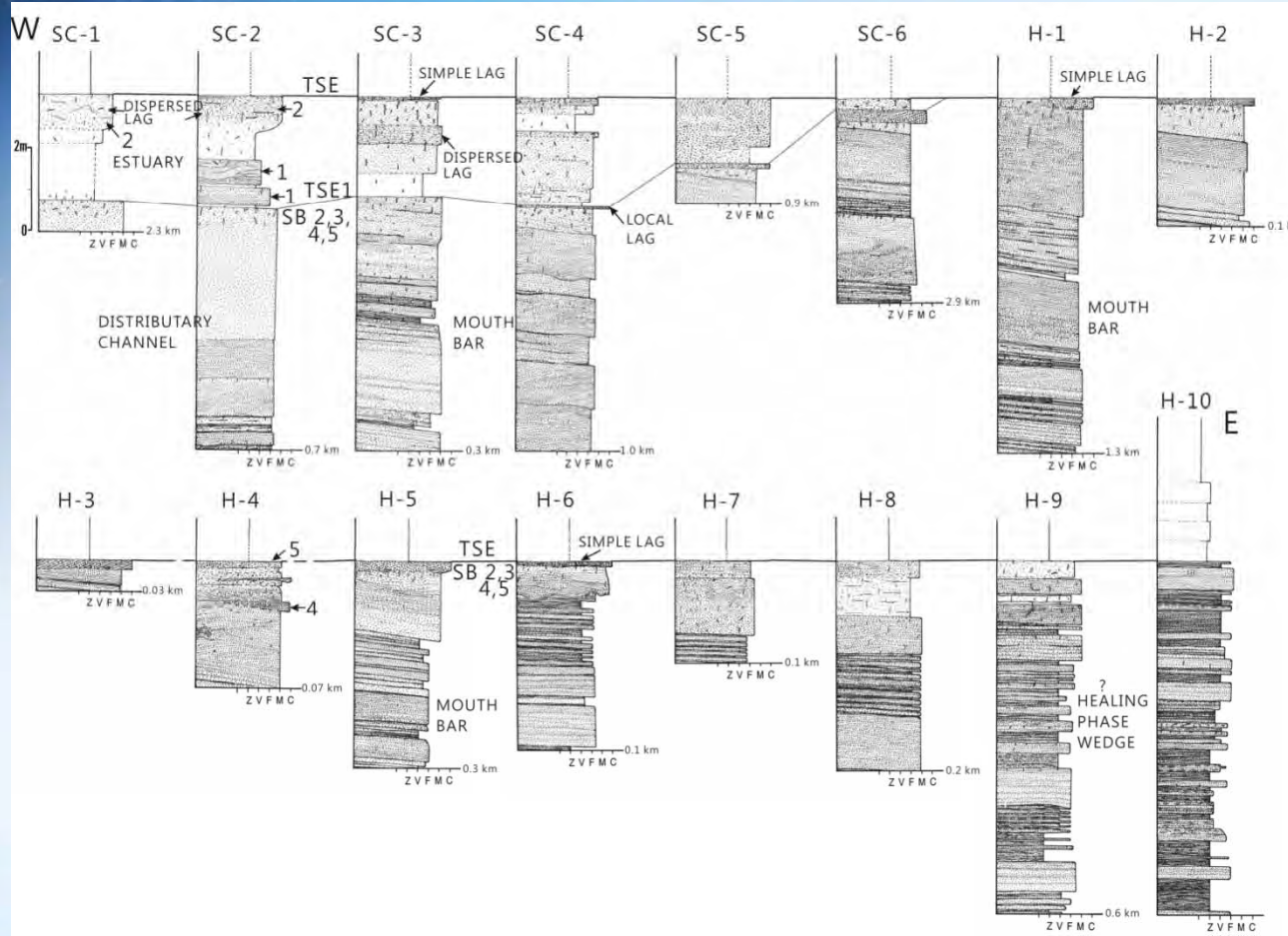




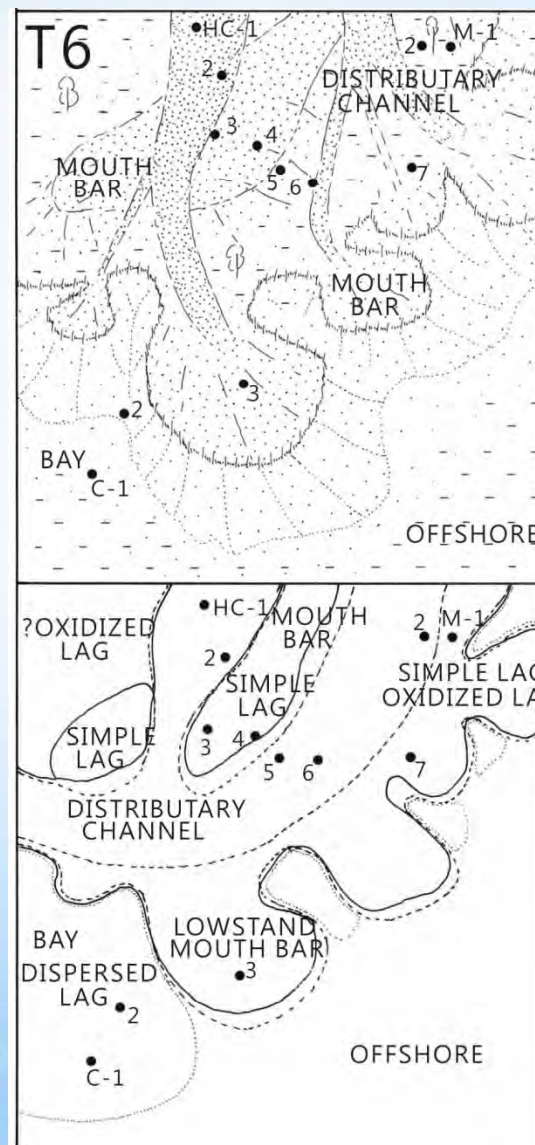
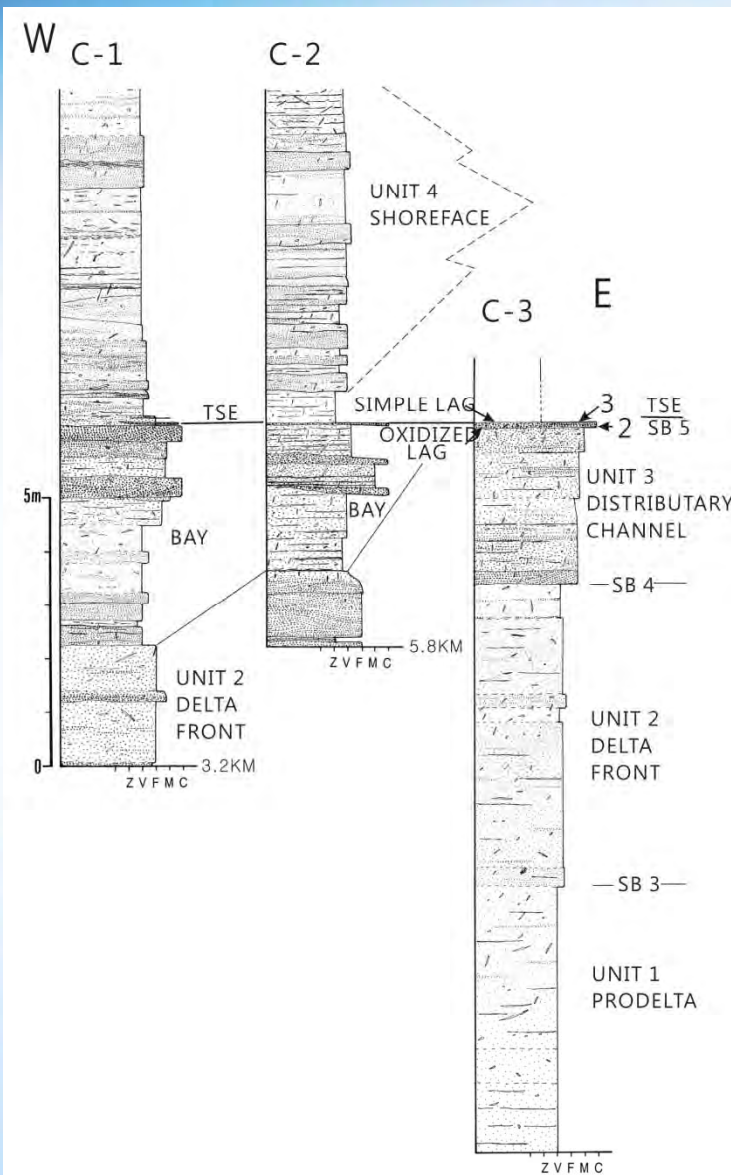
LAG DEPOSITS



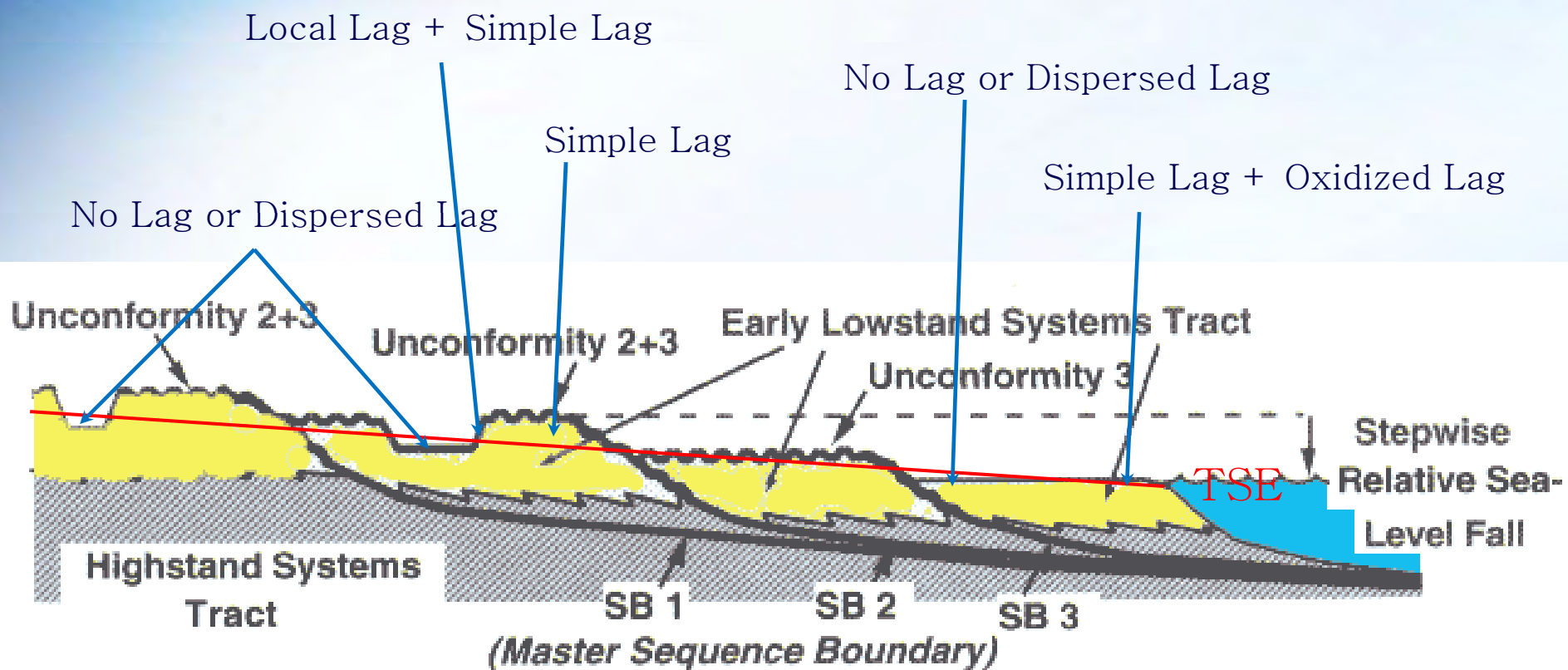
Lag Deposits in Spring Canyon Section



Lag Deposits in Cottonwood Creek Section



Distribution of Lag Deposits





THANK YOU

Slot Canyon, Arizona

Eolian Sandstone